



Difficult Access Drilling

► Quality · Safety · Value

Geotech has specialized equipment for difficult access drilling and construction coring projects. With 25 years experience, high quality equipment, and an impeccable safety record, Geotech is the best choice for a difficult access project.

Left: Drilling on a slope with Geotech track mounted Fraste rig.

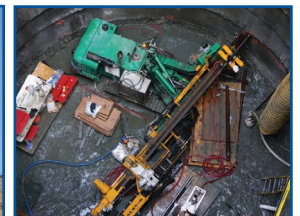
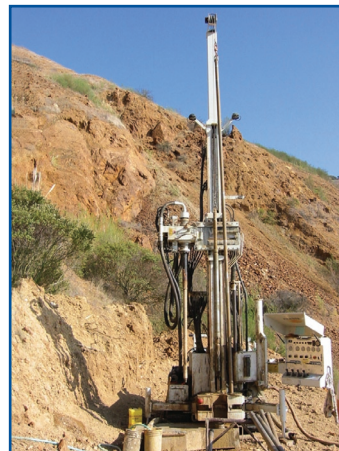
Top Right: Heli-portable equipment.

Bottom Right: Core samples



► Drilling Capabilities

- Double packer testing
- Oriented coring
- Televiewer logging
- Standard wire-line coring and casing advancement
- Vertical, inclined, and horizontal drilling and coring
- Instrument installation
- Skid-mounted and track-mounted drill rigs
- Heli-portable equipment



Above: Packer testing in a 70ft deep by 30ft diameter shaft with Geotech's Milto drill rig.

Left: Drilling on a slope with Geotech's track-mounted Fraste rig.



GEOTECHNICAL



EXPLORATION



ENVIRONMENTAL



HYDROGEOLOGICAL



GEOTHERMAL



HEALTH & SAFETY

